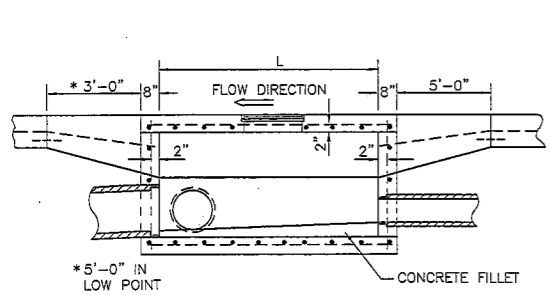
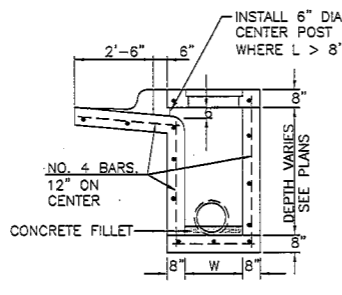


TOP VIEW

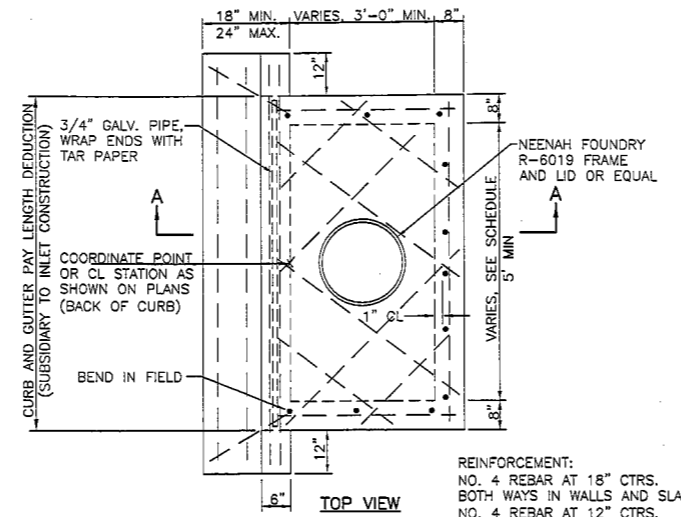


SECTION B-B

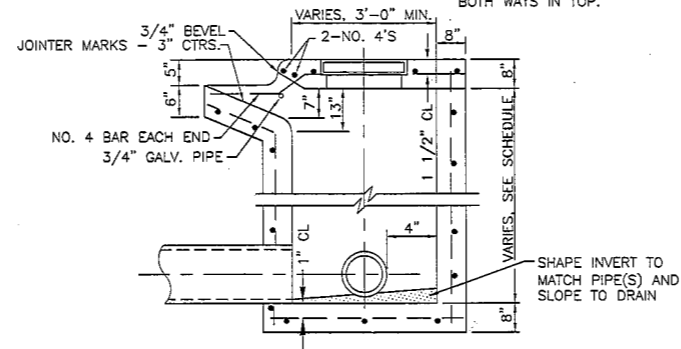
SETBACK CURB INLET
N.T.S.



SECTION A-A

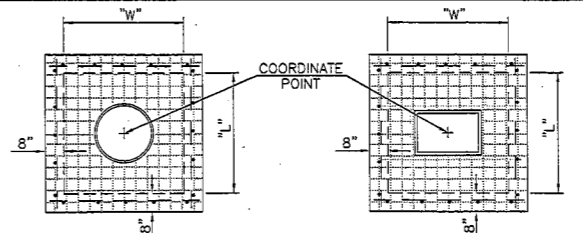


TOP VIEW

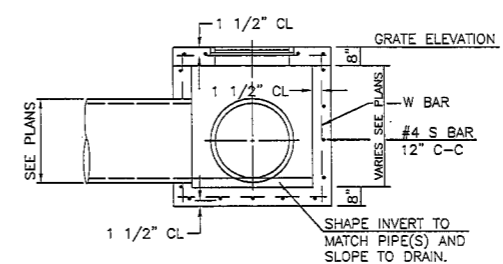


SECTION A-A

NON-SETBACK CURB INLET
N.T.S.



JUNCTION BOX TOP GRATE INLET TOP

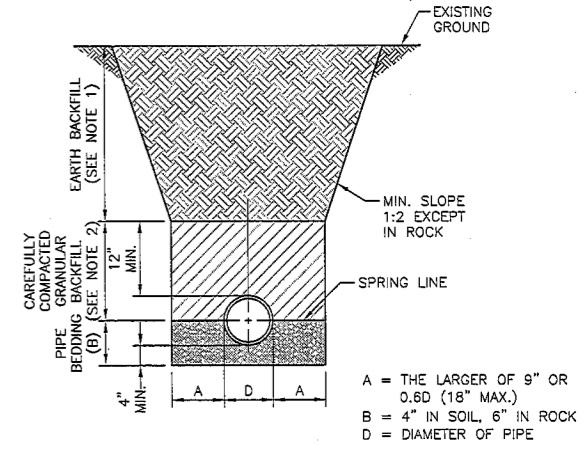


L OR W	S BARS
≤ 4'	#4@6"
4-6'	#5@8"
6-8'	#6@8"

H	W BARS
≤ 5'	#4@12"
5-8'	#5@8"
8-12'	#6@6"

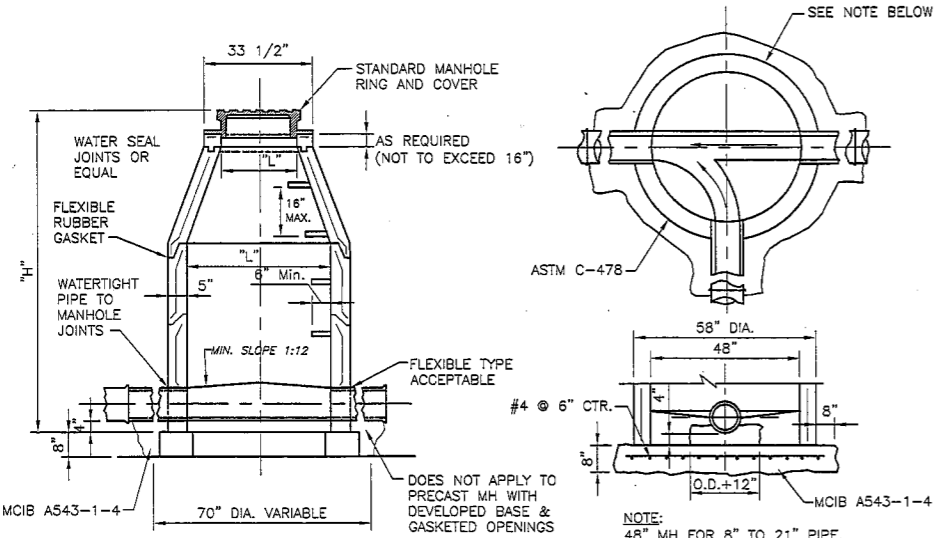
MIN. BOX SIZE:
3.5' X 4.0' FOR SINGLE GRATE &
4.0' X 5.5' FOR DOUBLE GRATE

GRATE INLET OR JUNCTION BOX
N.T.S.



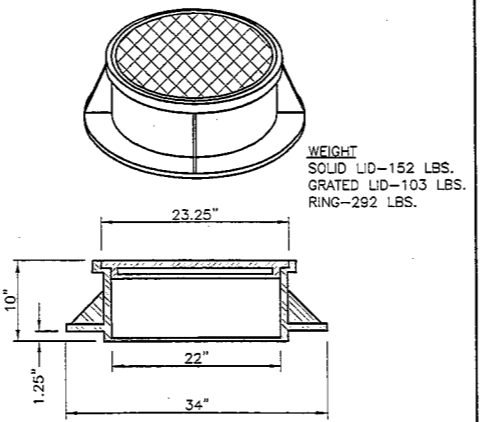
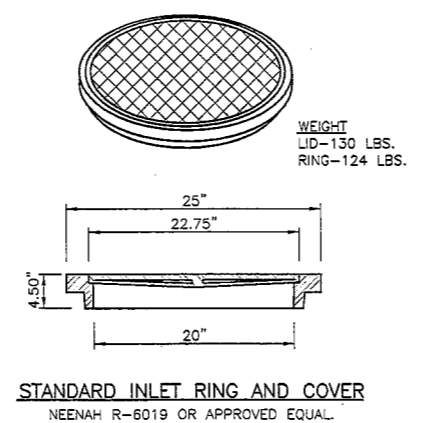
- NOTES:
- BACKFILL MATERIAL SHALL BE EARTH FILL TO 95% OF MAXIMUM DENSITY WHEN UNDER AREA TO BE PAVED, 90% OF MAXIMUM DENSITY IN OTHER AREAS.
 - GRANULAR BEDDING MATERIAL OR HAND COMPACTED SOIL - 90% OF MAXIMUM DENSITY USING ASTM D 698. MAXIMUM LIFT THICKNESS 6". GRANULAR BEDDING MATERIAL SHALL BE USED FOR ALL PIPE EXCEPT REINFORCED CONCRETE PIPE.
- BEDDING MATERIAL SHALL MEET THE FOLLOWING GRADATION:
100% PASSING 3/8" SIEVE
30-40% PASSING #4 SIEVE
0-4% PASSING #10 SIEVE

STORM SEWER BEDDING
N.T.S.

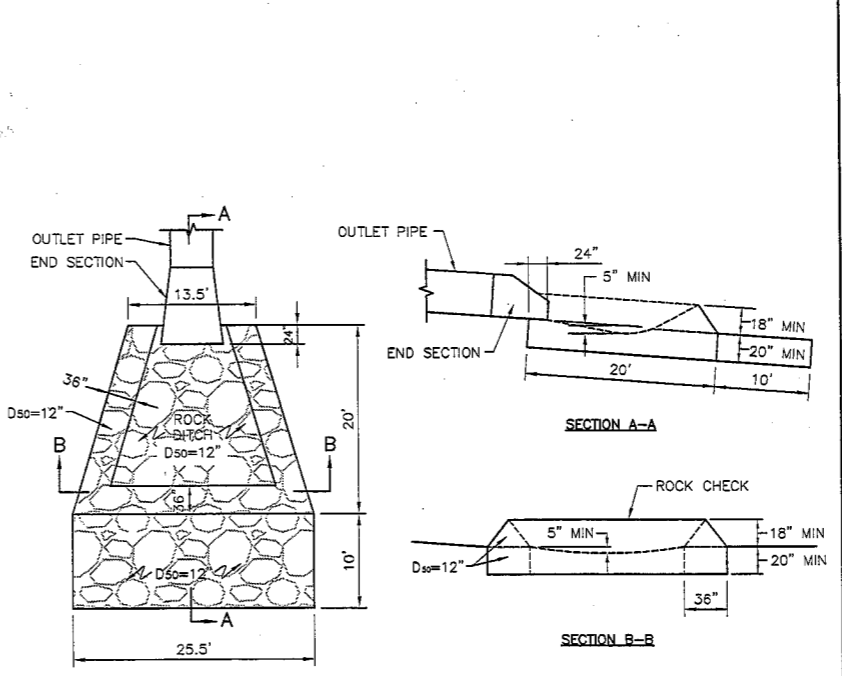


- NOTES:
- A MINIMUM OF 0.20' DROP REQUIRED BETWEEN INVERTS.
 - APPLY 2 COATS WATERPROOFING SEAL.
 - MUST MEET ASTM C-478.

STANDARD STORM MANHOLE
N.T.S.



STANDARD MANHOLE RING AND COVER
N.T.S.



STORM SEWER RIPRAP APRON
N.T.S.

- GENERAL STORM SEWER NOTES:
- THE WORKMANSHIP AND MATERIALS SHALL BE IN ACCORDANCE WITH THE CURRENT STANDARDS AND SPECIFICATIONS OF THE CITY OF JUNCTION CITY.
 - IT SHALL BE THE OWNER'S ENGINEER AND CONTRACTOR'S RESPONSIBILITY TO VERIFY THE EXISTENCE AND LOCATION OF ALL UNDERGROUND UTILITIES.
 - ALL SEWER TRENCHES UNDER THE 45 DEGREE ZONE OF INFLUENCE LINE OF EXISTING OR PROPOSED PAVEMENTS, BIKE PATHS, SIDEWALKS OR DRIVE APPROACHES SHALL BE BACKFILLED WITH KDOT AB3 GRANULAR MATERIAL COMPACTED TO AT LEAST 95% OF MAXIMUM DENSITY.
 - JOINTS FOR STORM SEWER SHALL BE PREMIUM JOINTS (TONGUE AND GROOVE WITH RUBBER GASKETS).
 - USE 3500 P.S.I. CONCRETE IN SIDE WALL AND SLAB.
 - PROVIDE 3/4" ROUNDED EDGE ON ALL EXPOSED CORNERS.
 - WHERE INLETS ARE SET IN CURVES, FORM FRONT WALL TO CONFORM TO CURVE.
 - PRE-CAST UNITS MAY BE SUBSTITUTED WITH THE ENGINEERS APPROVAL. SHOP DRAWINGS AND DESIGN CALCULATIONS MUST BE SUBMITTED.
 - THE TOP OF THE INLET SHALL BE SLOPED TO FIT STREET, SIDEWALK, OR FINISHED GROUND ELEVATIONS.



CITY OF JUNCTION CITY, KANSAS	
STORM SEWER DETAILS	
MUNICIPAL SERVICES DIRECTOR GREGORY S. McCAFFERY, P.E.	DATE: 10/08/2013
ENGINEERING DEPARTMENT 700 N JEFFERSON JUNCTION CITY, KS 66441 (785) 238-3103	DESIGN: _____ DRAWN: _____
SHEET 1 OF 1	